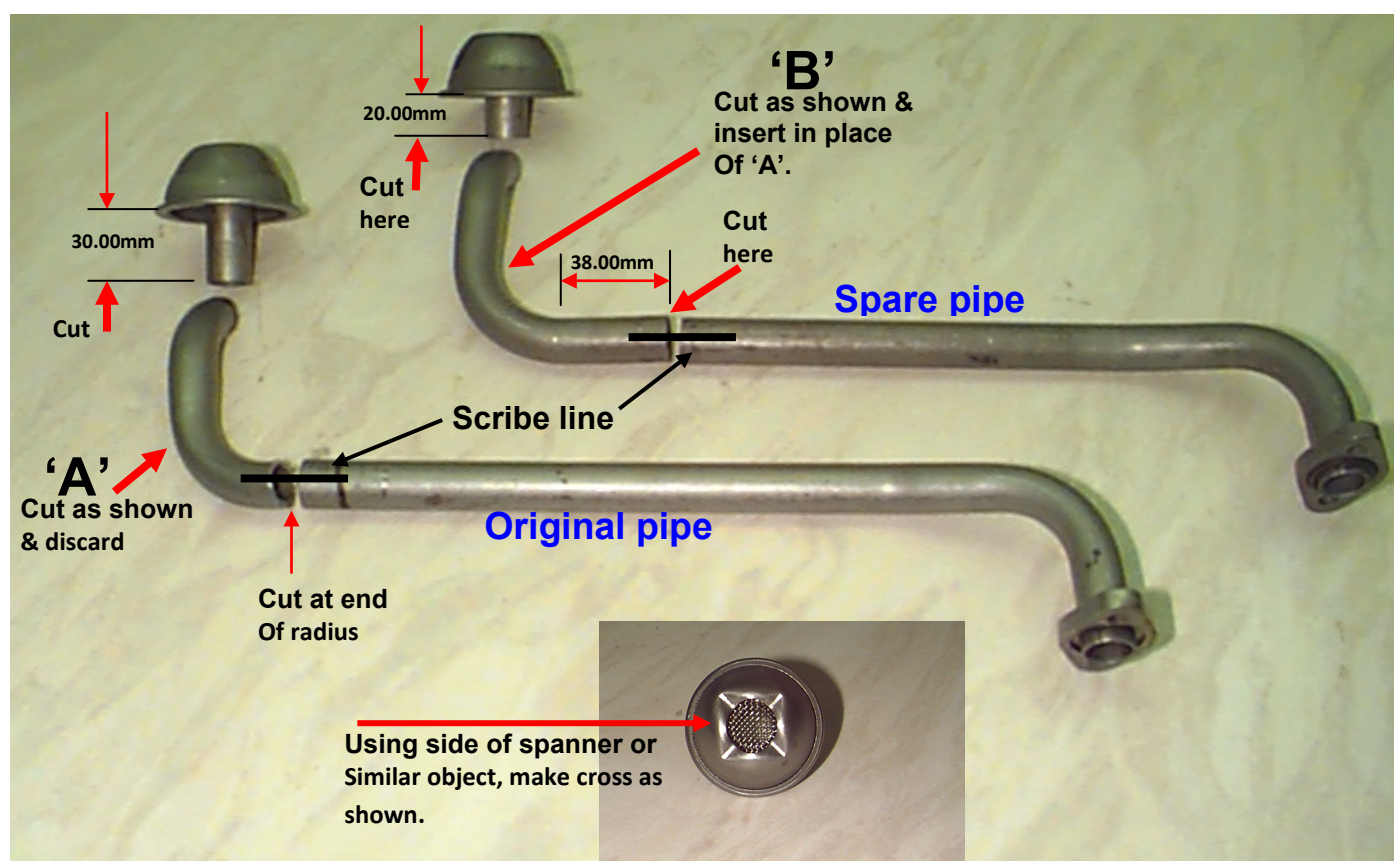


## XE pick up pipe modification for use with Manta big wing sump

These are the instructions for modifying a standard 2.0L XE pick up pipe to suit the Opel Manta big wing sump pan.

**The instuctions below must be be followed or engine failure will occur.**



## Manta big wing sump pick up pipe modification.

**\*\*Note\*\*** - Ensure brazing does not have any holes as air will get sucked into the oil system & then engine failure will happen.

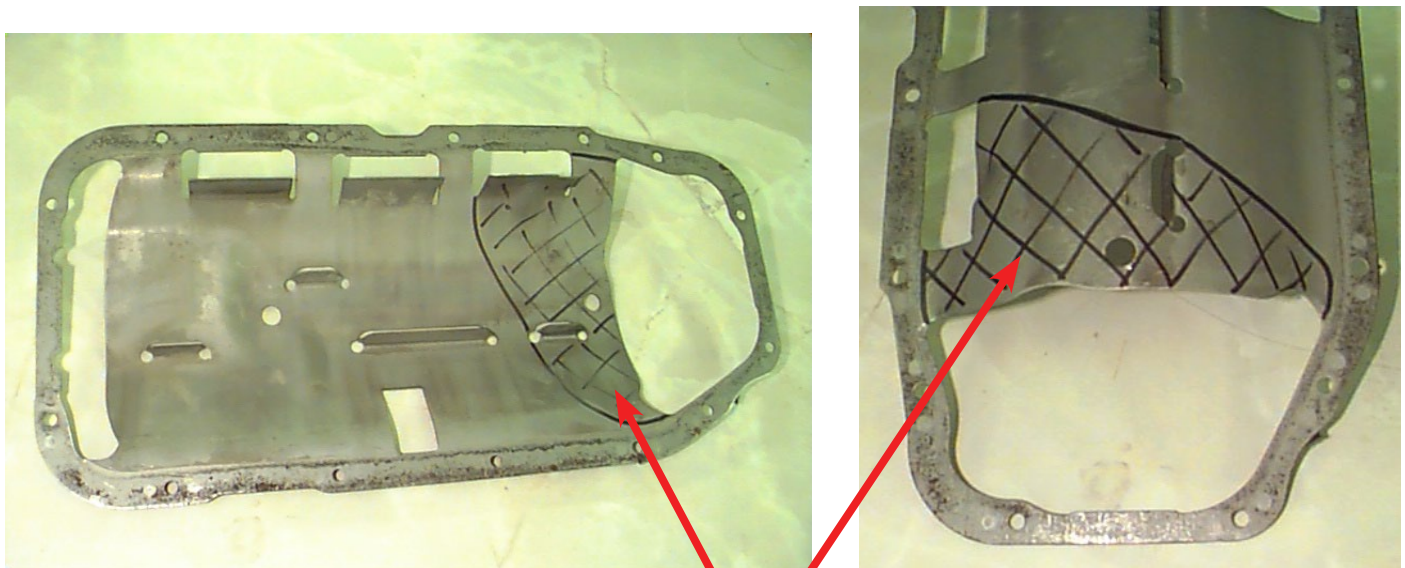
1. Scribe a line along both pipes, in the same place, where cut will be, this is to ensure correct alignment when brazing new section in.
2. On original pipe cut out section 'A' as shown & discard
3. On pipe filter housing from original pipe, using side of spanner handle or something similar, make cross shape indents as shown.
4. On donor pipe cut out section 'B' as shown.
5. Align scribe lines from section 'B' & original pipe & braze together.
6. Braze original filter housing with cross indents onto section 'B'.
7. Clean inside & outside of modified pipe thoroughly.
8. Use a new pick up pipe seal when re assembling.

Alternative (not recommended) method using 1 pick up pipe

1. Scribe a line along pipe where cut will be.
2. Cut pipe across scribe line & braze in a piece of tube 38mm long ensuring both scribe lines are aligned.
3. Cut pipe near filter & braze in a piece of tube 10mm long.
4. Clean inside & outside of modified pipe thoroughly.
5. Use a new pick up pipe seal when re assembling.

## 2.0L XE baffle modification for use with Manta 1.8L big wing sump

It is recommended that you use the original 2.0L XE baffle plate with the manta big wing sump because it helps with oil control. The modifications show you what is required to allow it to fit.




Cut out shaded area

***Free technical support is available on our website. If you require personalised technical support training, this is available at a chargeable rate.***

SBD Motorsport Ltd  
Unit 15, Red Lion Business Park, Red Lion Road, Surbiton, Surrey. KT6 7QD  
Tel: 020 8391 0121  
Website: [www.sbdmotorsport.co.uk](http://www.sbdmotorsport.co.uk)

 SBDMotorsport

 sbdmotorsport