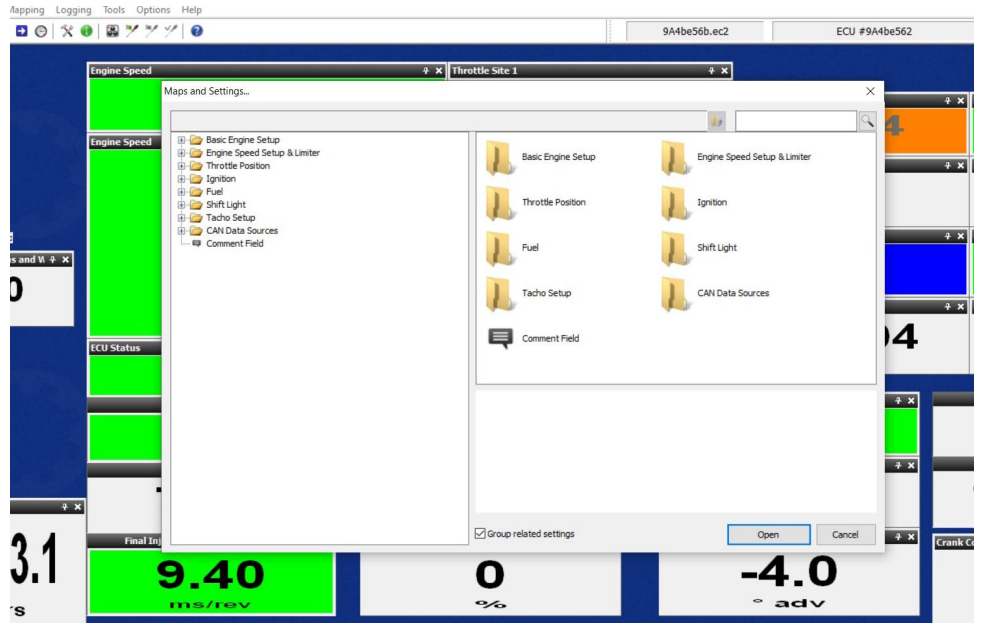


June 2021

## Easimap 6 Basic to Advanced User Instructions

These are the limited options that are available as a Basic User depending on your software.



## Changing from Basic to Advanced Level 1 User



To change to Advanced Level 1 User, Left click the Profile.

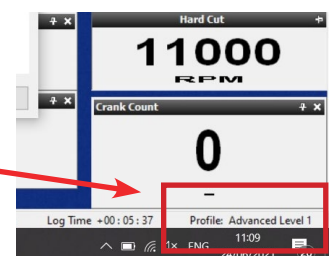


You can select Advanced Level 1 by highlighting it and clicking OK. There is no password.

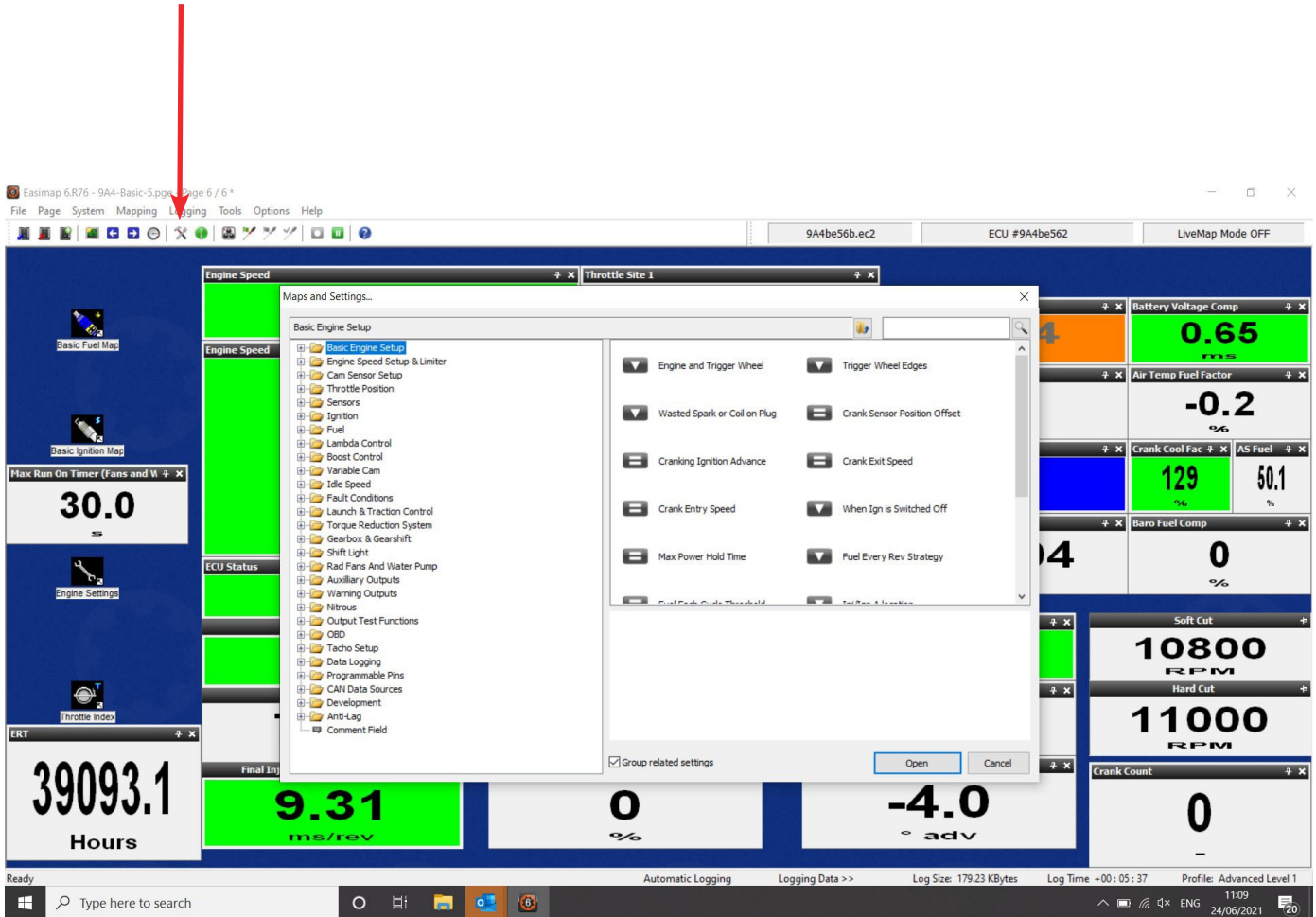
Master Level is only available to MBE Personnel and does not give the user any more access.



Once you have clicked OK, the profile shown in the bottom right hand corner will change to Advanced Level 1



When you click the Cross Tools symbol, you can see the list of options that is available with your current ECU software.



Later ECU software version will potentially have more options available to you, please ensure you are using the latest version.

We recommend that you check our website regularly for updates.

***Please be aware that Technical Support involving our Technicians is chargeable***

SBD Motorsport Ltd  
Unit 15, Red Lion Business Park, Red Lion Road, Surbiton, Surrey. KT6 7QD  
Tel: 020 8391 0121  
Website: [www.sbdmotorsport.co.uk](http://www.sbdmotorsport.co.uk)

