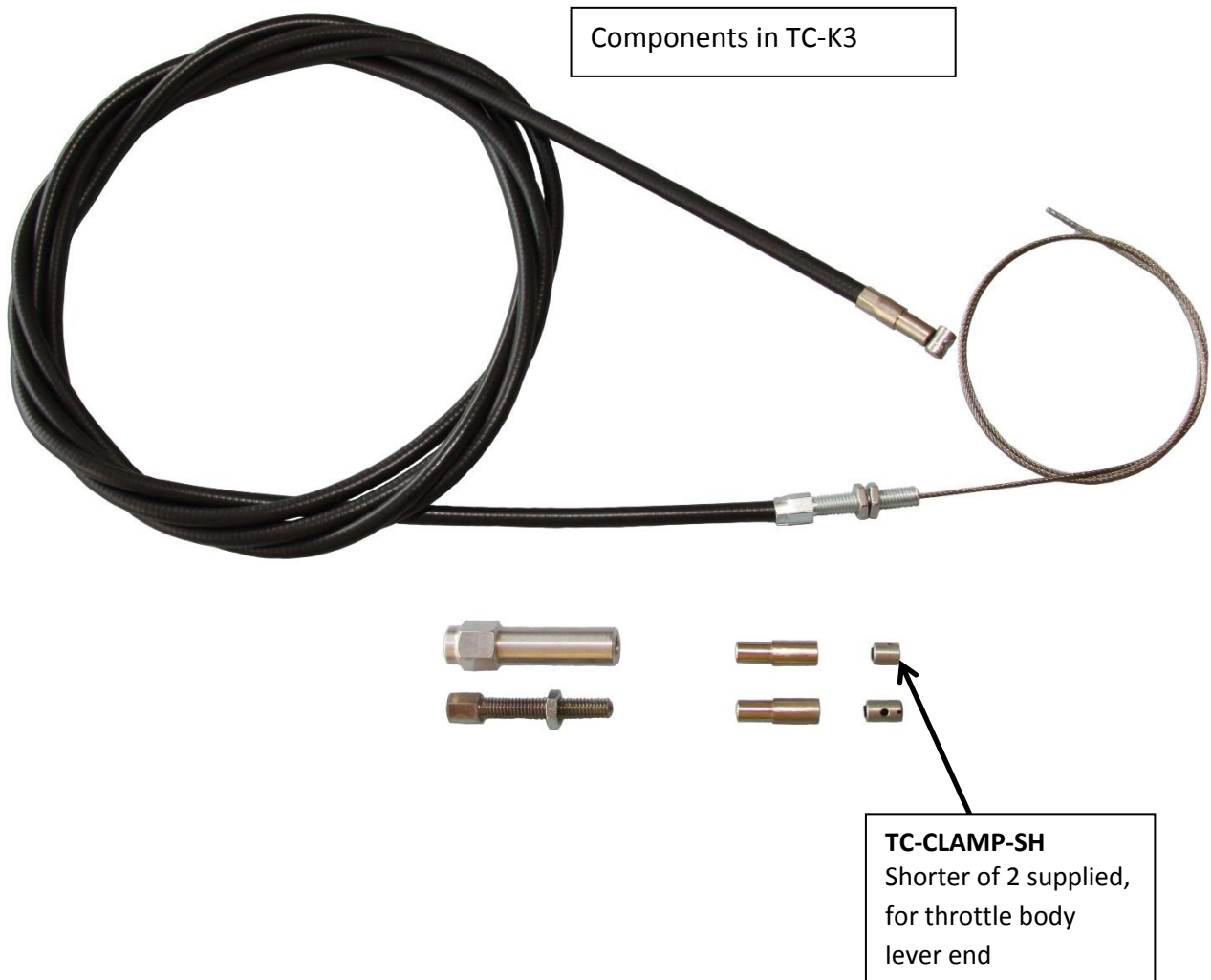
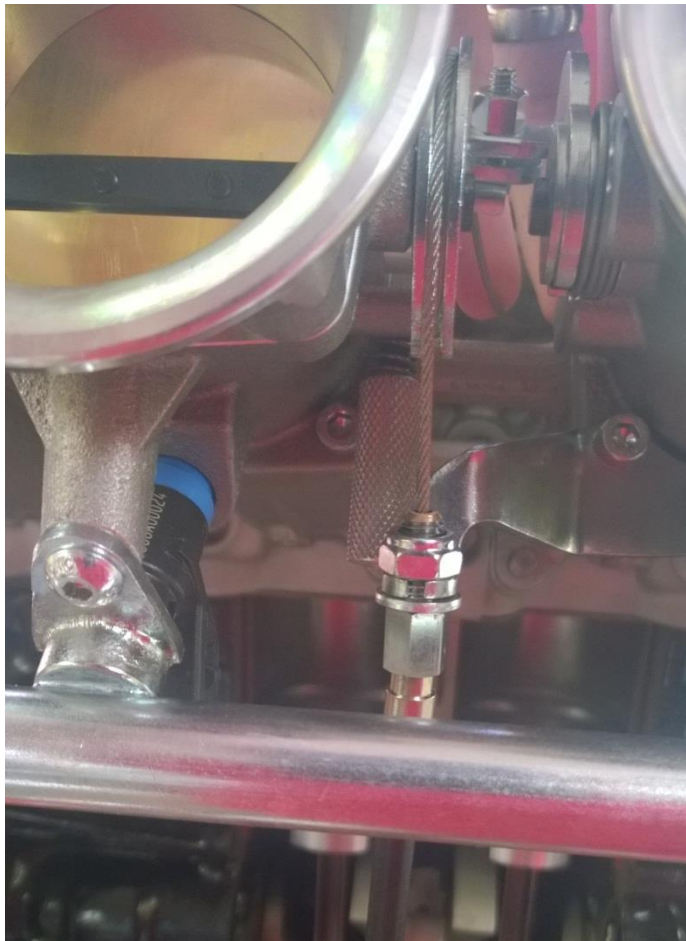


## Throttle Cable Kit SBD Part No. TC-K3

This throttle cable kit can be used with virtually any throttle body kit, however it was based around our high spec taper throttle kits: TP-VX-2.0-K3 and TP-DURA-2.0L-K3.



Affix the shortened adjuster with washer through the throttle cable bracket, fit the M6 Nyloc and tighten.



The SBD Inline adjuster can be placed anywhere in the cable run, select a position which allows access.



Once set, tighten the loc-nut.



The supplied cable length should be sufficient for virtually any car layout, trim cable to suit and use the stainless steel cable end caps to finish.

***Please be aware that Technical Support involving our Technicians is chargeable***

SBD Motorsport Ltd  
Unit 15, Red Lion Business Park, Red Lion Road, Surbiton,  
Surrey. KT6 7QD  
Tel: 0208 391 0121  
Website: [sbdmotorsport.co.uk](http://sbdmotorsport.co.uk)

 SBDMotorsport  
 sbdevelopments